



CLINICAL TRIAL FOR CANINE IBD

Seeking clinical cases undergoing diagnostic workup for chronic GI signs.

ELIGIBILITY:

- **DOGS only**
- **Over 1 yr old**, of any breed or sex.
- **MUST NOT BE ON TREATMENT** with antibiotics (including metronidazole, tylosin), corticosteroids, or other immunosuppressives.

What we cover:

- endoscopy and biopsy
- prescription dog food for 6 months
- in-depth follow-up

What we do not cover:

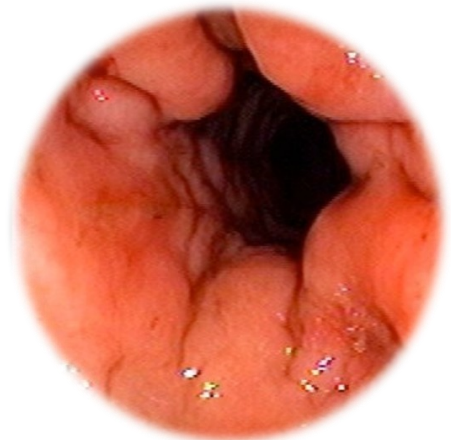
- pre-endoscopy work-up.
- medication costs.

Study sponsors:

Morris Animal Foundation



Nestle-Purina



ENDOSCOPY-ONLY REFERRAL

FREE ENDOSCOPY AND 6 MONTHS OF FREE PRESCRIPTION DOG FOOD

If you are investigating a dog with chronic vomiting, diarrhea, or weight loss that requires UPPER GI ENDOSCOPY (stomach/SI), consider referral for anesthesia and endoscopy by ACVA & ACVIM diplomates AT NO CHARGE.

We require SI biopsies and blood from IBD affected dogs. We will provide follow-up and free prescription diet food for 6 months if IBD is diagnosed (no other treatment costs are provided).

Owners must participate in a 6 month treatment protocol involving dietary change, antibiotics, +/-immunosuppression (in non-responders).

CONTACT:

Kenneth W. Simpson ACVIM (kws5@cornell.edu)

Your minimum work-up MUST include:

- Full chemistry profile and CBC (submitted to Cornell diag lab)
- cPLI
- Full urinalysis
- Fecal culture & parasitology
- TLI, folate, B12
- Abdominal ultrasound

SIMPSON LABORATORY

VMC 2016
Cornell University
Ithaca
NY 14853

*Dogs already on medication are not eligible

*Colonoscopy not offered

*NO additional subsidies possible