

# TISSUES FOR RABIES DIAGNOSIS

Fig 1. With small animals cut off the caudal half of the cerebellum through and including brainstem.

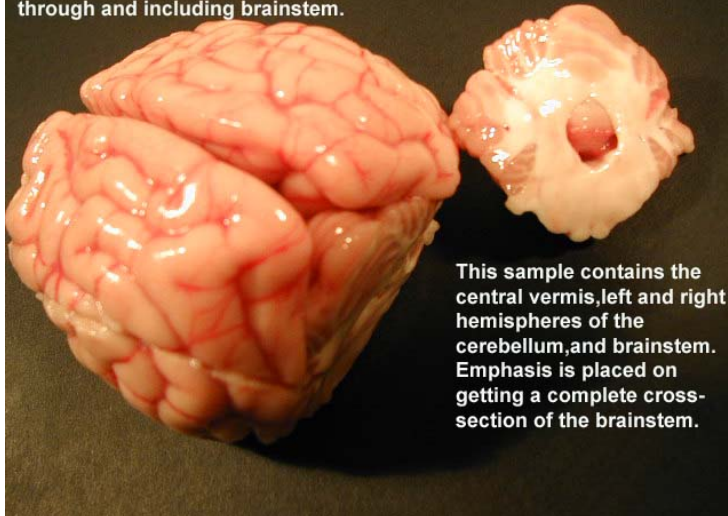


Fig 2.

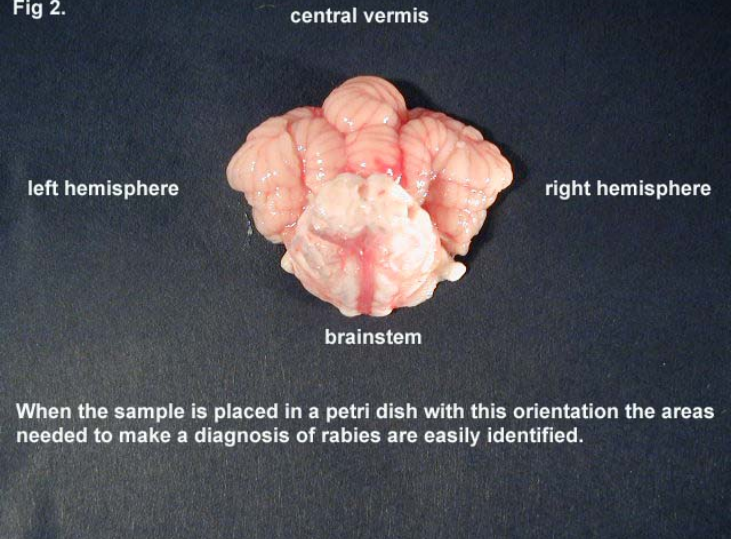
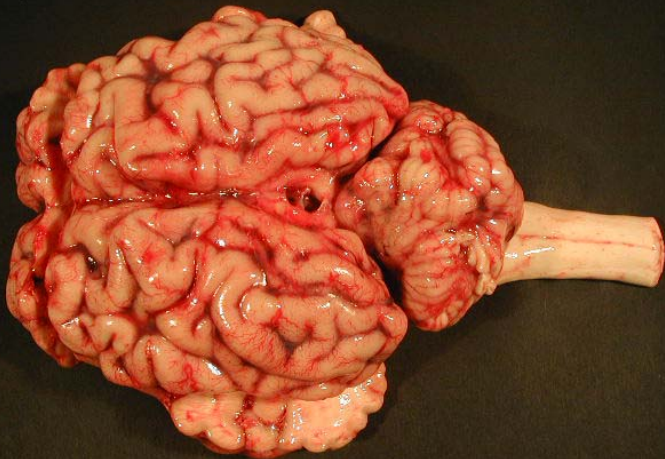


Fig 3.



Submissions from a bovid are handled differently to include testing for BSE

Fig 5.

A vertical section through the middle of the cerebellum is taken, representing the central vermis and both lateral hemispheres. It is important to provide adequate cerebellum. Additional sections may be included.

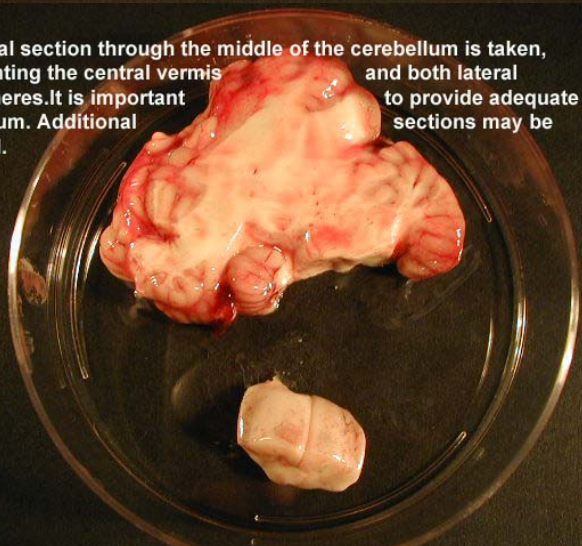


Fig 4.

In this case the cerebellum is removed,

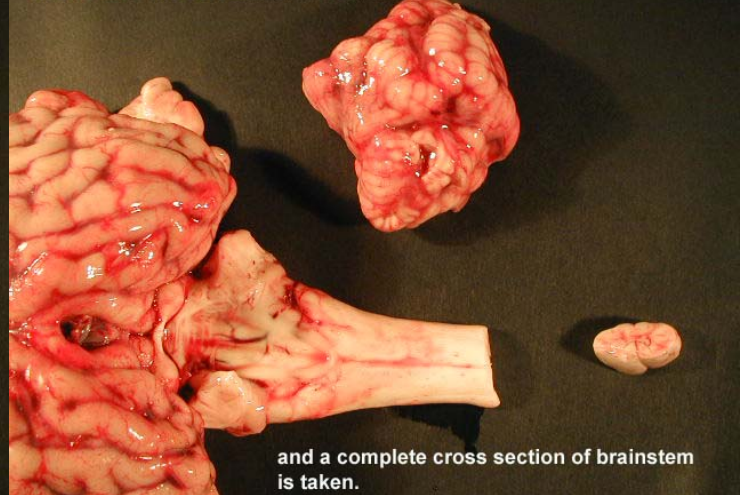
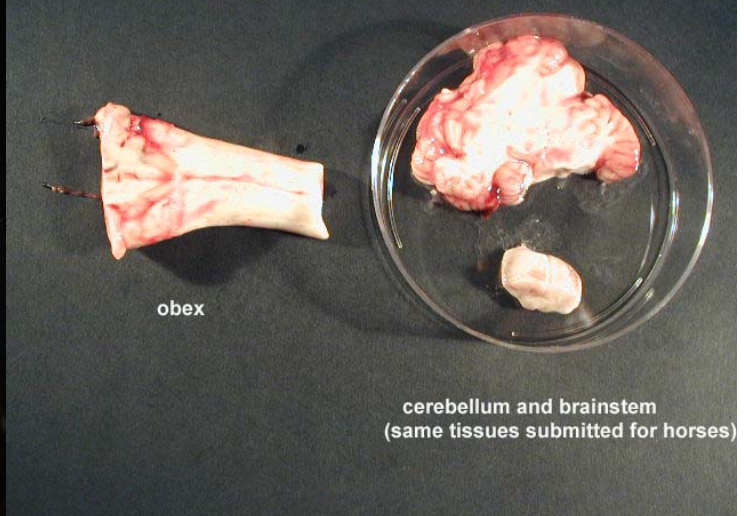


Fig 6.



For both BSE and Rabies testing, submit everything shown in Figure 6. Obex can be placed in a separate container. Petri dishes work well as they minimize jostling in shipment. The remainder of the brain can be used for other diagnostics.